



# PHARMA PACKAGING SOLUTIONS

PACKAGING MACHINES MADE IN GERMANY

## HEINO ILSEMAN



### BLISTER SOLIDA

Tablets  
Oblongs  
Capsules



### BLISTER LIQUIDA

Syringes  
Vials  
Ampoules



### CARTONER HORIZONTAL

Blister  
Bottles  
Tubes



### CARTONER VERTICAL

Pharma  
Health Care  
Medical



### PHARMA AUTOMATION

Handling Solutions  
End-of-Line Packaging  
Foil Wrapping



## ABOUT OUR COMPANY

Heino Ilsemann GmbH, located in Bremen, Germany designs and manufactures packaging machines optimized for the pharmaceutical industry.

Our portfolio includes blister machines, horizontal and vertical working cartoners, End-of-Line-systems and individual packaging solutions.

In over 70 countries worldwide our costumers are working with machines and systems from Heino Ilsemann GmbH.

You can expect the best possible solution for your application from us.

Our focus is on providing suitable solutions according to our customers' requirements. We support our customers in process development and project planning to ensure a high production-effency.

### HEINO ILSEMANN GMBH

LOCATION:	BREMEN, GERMANY
FOUNDED:	1965
HEAD:	STEPHAN ILSEMANN
EMPLOYEES:	>300
STRUCTURE:	FAMILY-OWNED COMPANY
REPRESENTATIVES:	WORLDWIDE IN OVER 35 COUNTRIES





**BLISTER SOLIDA**

Tablets  
Oblongs  
Capsules



BLISTER SOLIDA | 4



**BLISTER LIQUIDA**

Syringes  
Vials  
Ampoules



BLISTER LIQUIDA | 10



**CARTONER HORIZONTAL**

Blister  
Bottles  
Tubes



CARTONER HORIZONTAL | 12



**CARTONER VERTICAL**

Pharma  
Health Care  
Medical



CARTONER VERTICAL | 16



**PHARMA AUTOMATION**

Handling Solutions  
End-of-Line Packaging  
Foil Wrapping



PHARMA AUTOMATION | 18



## BLISTER SOLIDA

Tablets  
Oblongs  
Capsules

## FOR SOLIDA PRODUCTS

Focus of the BS-series is packing of solida products.

Both machine types are suitable for different solida products, various production quantities and fast format changes.



### BS-300

#### TECHNICAL INFO

output	max. 300 blisters/min.
forming area	150 x 150 mm
forming depth	max. 12 mm

### BS-600

#### TECHNICAL INFO

output	max. 600 blisters/min.
forming area	258 x 205 mm, 258 x 290 mm
forming depth	max. 20 mm





Brush box



Combi feeding system with roller



Combi feeding system with channels



Dedicated high speed feeding system



## BLISTER SOLIDA

Tablets  
Oblongs  
Capsules



## CARTONER HORIZONTAL

Blister  
Bottles  
Tubes

## BLISTER MACHINE + CARTONER

The BLICA-600 combines our BS-600 blister machine with a continuous cartoner from the CA-series, what makes high production speed and fast changeovers possible.



BLISTER MACHINE  
& CARTONER

## BLICA-600

### TECHNICAL INFO

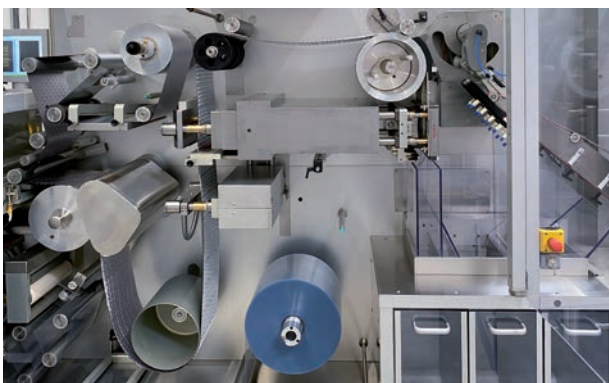
output	forming area	forming depth	carton size A x B x H
max. 600 blisters/min. max. 400 cartons/min.	258 x 205 mm 258 x 290 mm	max. 20 mm	max. 105 x 100 x 200 mm



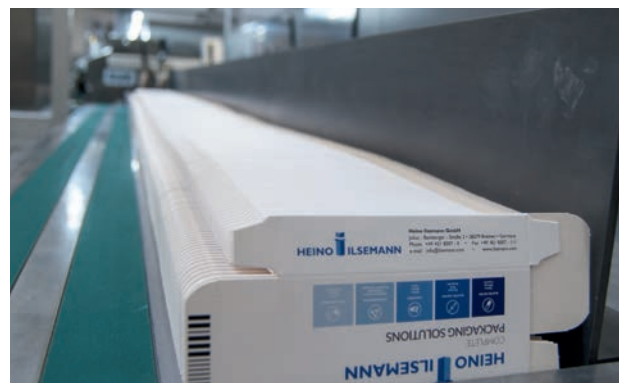
Interlinkage blister machine and cartoner



Feeding and inspection area



Interior view blister machine



Folding box magazine



## BLISTER SOLIDA

Tablets  
Oblongs  
Capsules



## BLISTER LIQUIDA

Syringes  
Vials  
Ampoules

## FOR LIQUIDA AND SOLIDA PRODUCTS

The BL-200 blister machine is suitable for the packing of solid, semi-solid and liquid products with a speed up to 750 blisters per minute. The blister machine will be projected individually for each customer.

The blister machine can be used for thermoforming and cold formable materials.

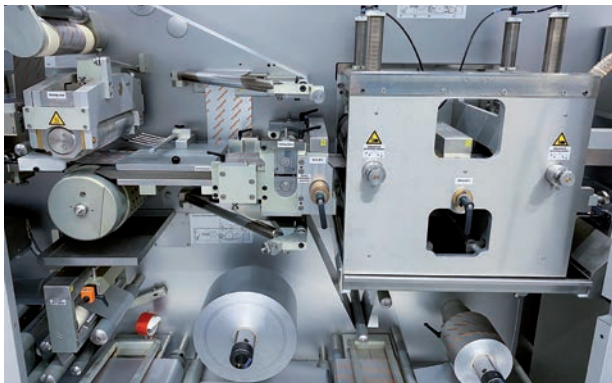


## BL-200

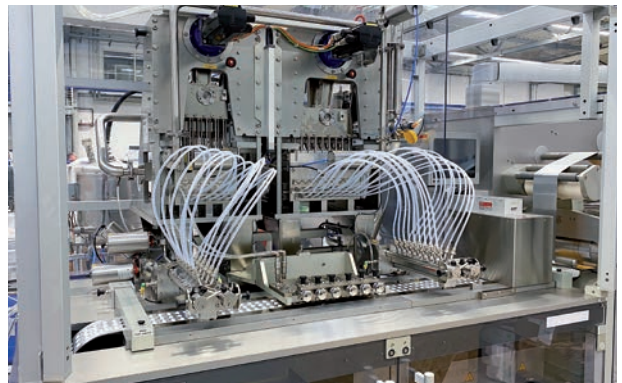
### TECHNICAL INFO

sealing	output	forming area	forming depth
rotary sealing	max. 750 blisters/min.	258 x 170 mm	max. 20 mm

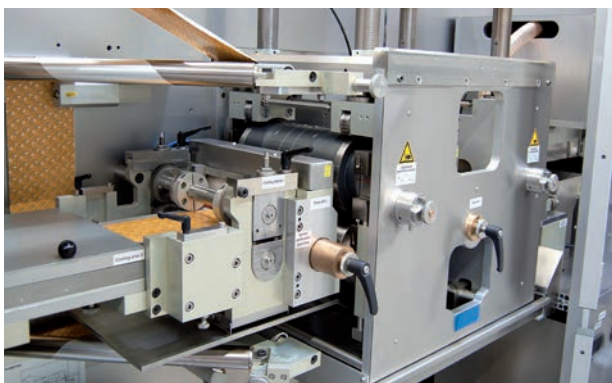




Interior view blister machine



Feeding system for semi-solid products



Perforation and embossing station



In-Process-Control



## BLISTER LIQUIDA

Syringes  
Vials  
Ampoules

## FOR LIQUIDA PRODUCTS

The BL-400 is a blister machine for secondary packaging of liquid products with an output of up to 400 blisters per minute.

The blister machine can be used for thermoforming and cold formable materials.



## BL-400

### TECHNICAL INFO

sealing	output	forming area	forming depth
platen sealing	max. 400 blisters/min.	250 x 180 mm	max. 35 mm



Platen sealing station



Thermo- / coldforming station



SCARA syringe feeding



Delta picker



CARTONER HORIZONTAL

Blister  
Bottles  
Tubes

## INTERMITTENT

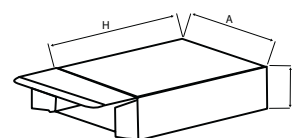
Our intermittent working cartoners are suitable for small or medium-sized batches of various solid and liquid products.

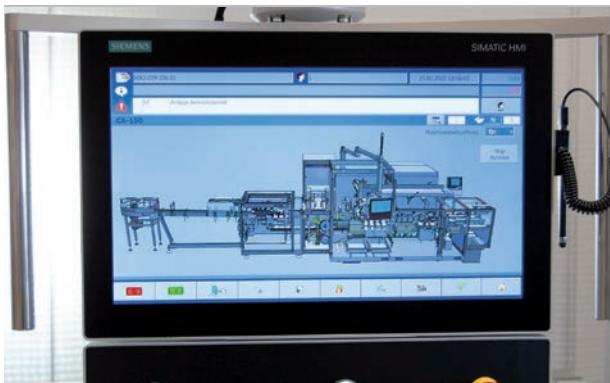
All common types of closures and folding carton types, as well as Euro-hole cartons and tamper-evident solutions can be used on our cartoners.



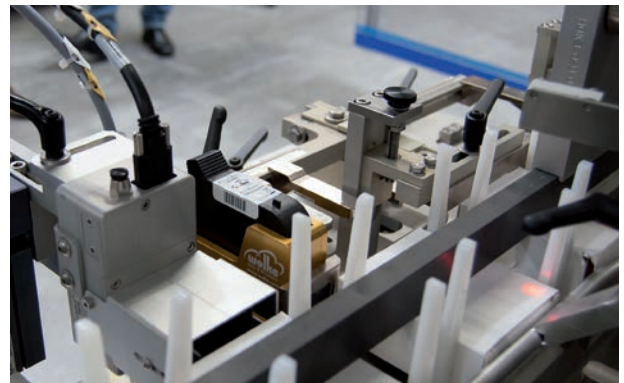
### CA-150

TECHNICAL INFO	CA-100L	CA-120M	CA-150
output [cartons/min.]:	max. 100	max. 120	max. 150
mode of operation:	intermittent	intermittent	intermittent
A - carton width [mm]:	35-210	25-130	25-90
B - carton height [mm]:	15-150	15-90	15-90
H - carton length [mm]:	85-210	65-210	65-150 , 85-210

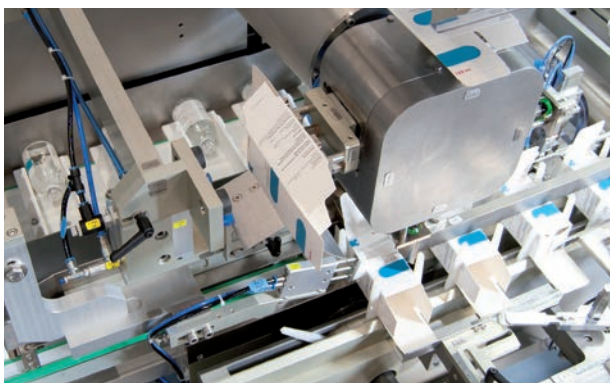




HMI touchpanel



Track & Trace: Solutions for serialization and aggregation



Carton pick-up and insertion



Digital position indicator



## CARTONER HORIZONTAL

Blister  
Bottles  
Tubes

## CONTINUOUS

Our continuous working cartoners are suitable for medium-sized or large batches of various solid and liquid products.

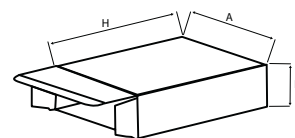
All common types of closures and folding carton types, as well as Euro-hole cartons and tamper-evident solutions can be used on our cartoners.



## CA-300

## TECHNICAL INFO

	CA-200	CA-300	CA-400
output [cartons/min.]:	max. 200	max. 300	max. 400
mode of operation:	continuous	continuous	continuous
A - carton width [mm]:	25-105	25-105	25-105
B - carton height [mm]:	15-100	15-100	15-100
H - carton length [mm]:	65-200	65-150	65-150





Rotary carton feeder



Continuous product infeed



Feeding units for leaflets and booklets



Inkjet printer and OCR/OCV print control



CARTONER VERTICAL

Pharma  
Health Care  
Medical

## VERTICAL

The TL-25 is a top loading cartoner for packing of various products in folding cartons with tuck-in flaps or automatic bottoms.

The feeding of products takes place from the top.

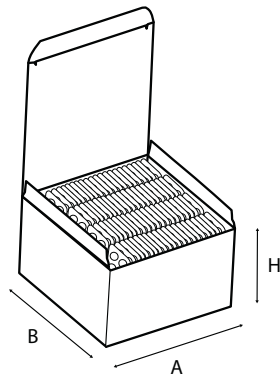


## TL-25

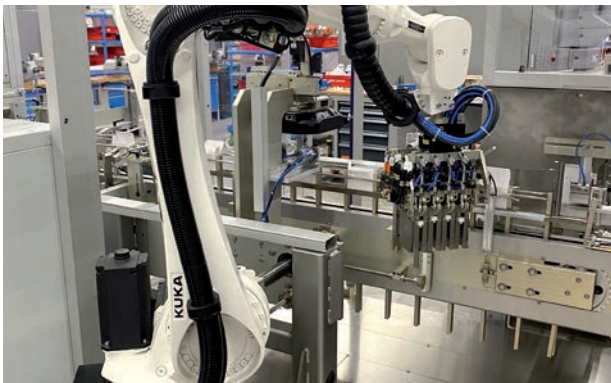
### TECHNICAL INFO

### TL-25

output [cartons/min.]:	max. 25
mode of operation:	intermittent
A - carton width [mm]:	50-200
B - carton length [mm]:	30-200
H - carton height [mm]:	70-150



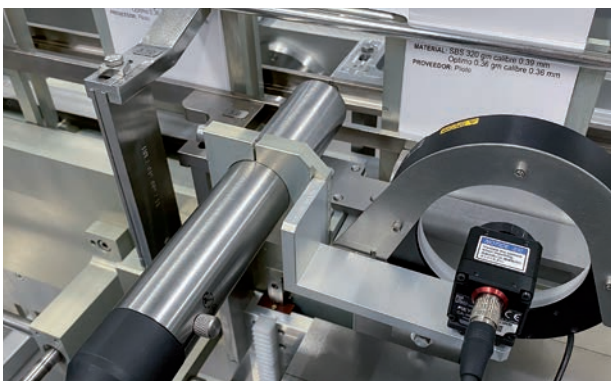




Robot for product feeding



Blister presence detection



Inkjet printer and OCR/OCV print control



Magazine for small and large folding cartons



## PHARMA AUTOMATION

Handling Solutions  
End-of-Line Packaging  
Foil Wrapping

## INDIVIDUAL PACKAGING SOLUTIONS

We can start with a clean piece of paper, if you are looking to package a new product, for which no standard system meets the needs. With our know-how and your specific requirements as a guideline, we will create a machine uniquely capable of achieving your production goals.

We rely on a large team of creative engineers, designers and software engineers with pharmaceutical experience.

Production cell for  
tissue culture flasks



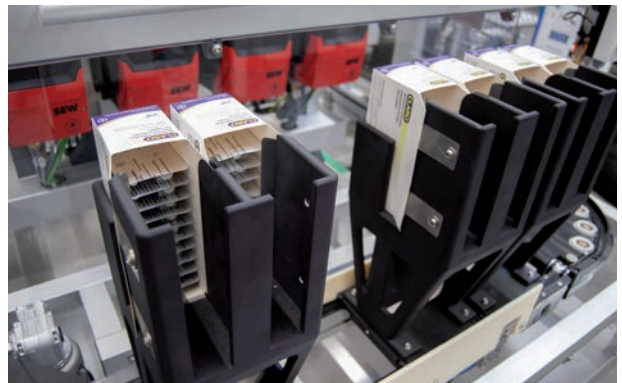
Offline assembly and packing  
system of petri dishes

Packaging line for tubes and applicators  
with pick & place units





Carton erector



Workpiece carrier for multipacks



Tray unloader



Carbon gripper



## PHARMA AUTOMATION

Handling Solutions  
End-of-Line Packaging  
Foil Wrapping

## FOR FOLDING CARTONS

The FSM series are modular designed and individual configurable marking and labeling systems in a compact design. All common folding cartons can be processed with both FSM models.

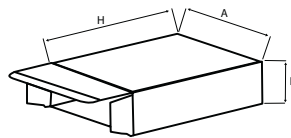
The systems can be flexibly integrated into existing and new production lines. Due to various, selectable options, each system can be adapted to meet customer-specific requirements, in order to clearly mark, identify, label and track the folding cartons subsequently.

### FSM-150

#### TECHNICAL INFO

#### FSM-150

output [cycles/min]:	max. 150
mode of operation:	continuous
A - carton width [mm]:	25-130
B - carton height [mm]:	15-90
H - carton length [mm]:	65-210

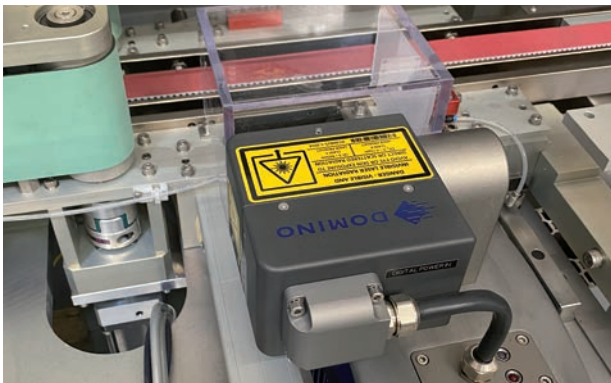


### FSM-300

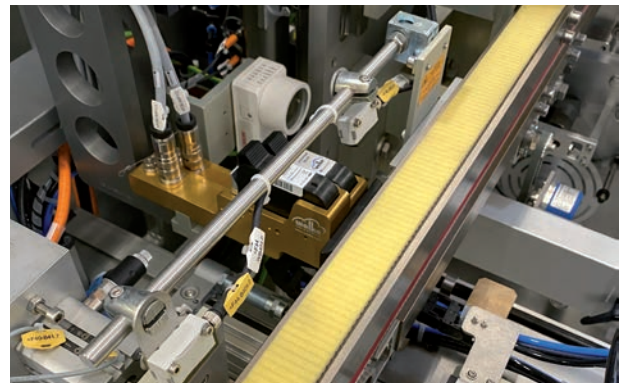
#### TECHNICAL INFO

#### FSM-300

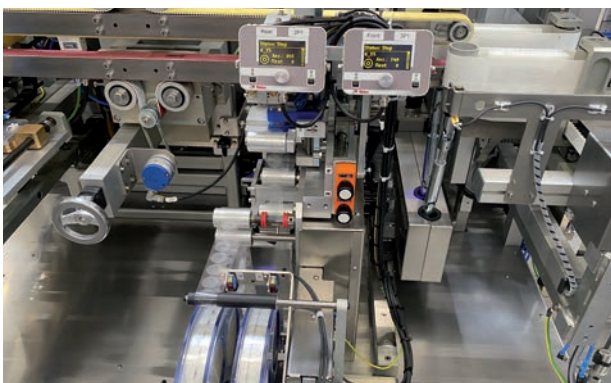
output [cycles/min]:	max. 300
mode of operation:	continuous
A - carton width [mm]:	25-130
B - carton height [mm]:	15-90
H - carton length [mm]:	65-210



Laser printer



Inkjet printer and OCR/OCV print control



Tamper evident labeler



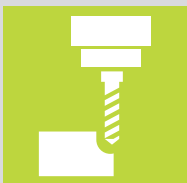
Reject and cross conveyor before downstream machine

# SERVICE for clients



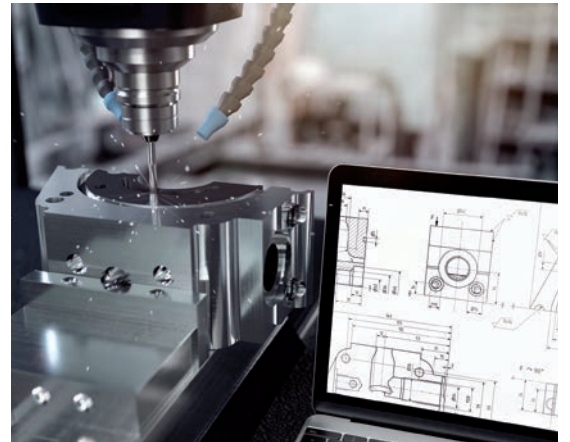
## SPARE PARTS

- Permanent stock of spare and wear parts
- Peripheral equipment and tools



## TOOL SHOP

- Format parts manufacturing
- Precision parts manufacturing
- Prototyping



## PROJECT MANAGEMENT

- One face to customer
- Milestone and project schedules
- Planning, organizing, securing and managing of customers needs





### QUALIFICATION AND VALIDATION

- DQ, IQ/OQ, PQ
- Change control documentation
- Support for full validation process



### TECHNICAL SUPPORT AND SERVICE

- Telephone support
- Remote service
- Commissioning
- Service agreements
- Trainings, overhauls, relocations
- Maintenance visits



### WORLDWIDE AGENCIES

- Local representatives with technical service around the world



## PACKAGING MACHINES MADE IN GERMANY



### BLISTER SOLIDA

Tablets  
Oblongs  
Capsules



### BLISTER LIQUIDA

Syringes  
Vials  
Ampoules



### CARTONER HORIZONTAL

Blister  
Bottles  
Tubes



### CARTONER VERTICAL

Pharma  
Health Care  
Medical



### PHARMA AUTOMATION

Handling Solutions  
End-of-Line Packaging  
Foil Wrapping

# HEINO ILSEMAN

#### Headquarter:

Heino Ilseman GmbH  
Julius - Bamberger - Straße 2  
28279 Bremen | Germany

Phone: +49 421 8412 - 0  
E-Mail: [info@ilseman.com](mailto:info@ilseman.com)

MORE INFORMATION:  
[www.ilseman.com](http://www.ilseman.com)

#### USA:

Ilseman Corporation  
2555 Westinghouse Blvd., Suite H  
Charlotte, NC 28273 | USA

Phone: +1 864-608-8339  
E-Mail: [sales-usa@ilseman.com](mailto:sales-usa@ilseman.com)

Follow us:

